

# NIBCO®

AHEAD OF THE FLOW™



## Butterfly Valves

# General Index

## Butterfly Valves

WARRANTY .....	4	ENGINEERING DATA INDEX .....	31
BUTTERFLY VALVES .....	5-27	Flow Data .....	32-33
OPTIONS AND		Properties of Materials .....	34-37
ACCESSORIES INDEX .....	28-30	Specifications .....	38
		Technical Information .....	39-44
		Actuation Data Sheet .....	45
		FIGURE NUMBER COMPARISONS .....	46

### Key to Butterfly Valve Figure Number System\*

<b>L</b>	<b>D</b>	<b>-</b>	<b>2</b>	<b>0</b>	<b>0</b>	<b>-</b>	<b>0</b>	
<b>Body Type</b>	<b>Body Material</b>	<b>Pressure Rating</b>	<b>Seat Material</b>	<b>Disc Material</b>	<b>Stem &amp; Bushing Combinations</b>		<b>Operating Mechanism</b>	
					<b>Stem</b>	<b>Upper &amp; Lower</b>	<b>Collar</b>	
L-Lug	D-Ductile Iron	L-Actuated	0-EPDM	0-Aluminum Bronze	0-416SS	Copper Alloy	Brass	0-Bare Stem
W-Wafer	C-Cast Iron	1-150 psi	1-Buna-N (Nitrile)	1-Ductile Iron <sup>1</sup>	1-416SS	316SS	Brass	3-Lever Lock
G-Grooved		2-200 psi	2-Fluoroelastomer	2-CF8M	2-17-4PH <sup>3</sup>	316SS <sup>3</sup>	316SS	(std)
F-Flanged		3-250 psi	5-UL/FM	6-EPDM Coated	5-416SS	TFE/Bronze	—	5-Gear
		4-300 psi	7-Polyimid	Ductile Iron <sup>2</sup>	7-416SS	TFE	—	
		5-285 psi		7-Buna-N Coated	8-316SS			
				Brass or Ductile Iron <sup>2</sup>				

\*This key is a guide only, it is not intended to infer that all combinations can or will be produced.

<sup>1</sup> Electro Nickel Plated. <sup>2</sup> Grooved and flanged end only.

<sup>3</sup> Lug style 14" and larger are 316SS stem with bronze bushings

### Key to N150 and N200 Butterfly Valves

<b>Series</b>	<b>Body Style</b>	<b>Seat Material</b>	<b>Disc Material</b>	<b>Operator</b>
N150 = 14"-24"	1 = Wafer	3 = EPDM	5 = Aluminum Bronze	LH = Lever
N200 = 2"-12"	2 = Lug	4 = Buna	6 = Ductile Iron	GO = Gear

# how to order

State quantity, figure number and size for each valve you wish to order. See individual valve catalog pages for specific or special product designations.

#### HOW MANY TO ORDER –

NIBCO valves are decimal packed for your convenience in handling, shipping and stock-keeping. Number in master carton varies with item.

#### POLICY ON RETURNS TO FACTORY –

NO NIBCO valves are to be returned without prior written agreement. Transportation must be prepaid. A 20% charge will be made to cover cost of rehandling and reinspection.

#### TECHNICAL ASSISTANCE –

Engineers, contractors, wholesalers or manufacturers may obtain special or technical assistance from any factory representative of NIBCO. Write, fax or phone.

NIBCO INC.  
World Headquarters  
1516 Middlebury Street  
Elkhart, IN 46516-4740  
USA

Phone 1.574.295.3000  
Fax 1.574.295.3307  
Technical Service Phone 1.888.446.4226  
Fax 1.888.336.4226

To the best of our knowledge the information contained in this publication is accurate. However, NIBCO® does not assume any liability whatsoever for the accuracy or completeness of such information. Final determinations of the suitability of any information or product for the use to be contemplated is the sole responsibility of the user. The manner of that use and whether there is any infringement of patents is also the sole responsibility of the user.

## 2000/3000 Series Butterfly Valves

\* **Threaded Collar Bushing** for positive stem retention (blow-out proof)

**Body and Stem O-ring Seals** of EPDM, Buna-N or Fluorocarbon.

**Extended Neck** for insulation up to 2".

**Molded-in Liner** fully supported by valve body at flange seals. Eliminates leakage between body and liner as in cartridge or boot type liners. Provides dead-end service without the need for a flange on the downstream side.

\* **Do not remove collar bushing with valve under pressure.**



**High-Strength Stem** materials with one-piece thru-disc design.

**Upper and Lower Bushings** are standard for smooth valve operation.

**Streamlined Spherical Disc** with high flow capacity.

**Internal Stem/Disc Drive** eliminates the need for pins or bolts which create additional leak paths, turbulence in the waterway or flow reduction.

**Ductile Iron Body** more durable than cast iron (reduces breakage).

**"Blind-Hole"** lower bushing prevents leakage.

### A High-Pressure Resilient-Seated Butterfly Valve Featuring:

- Pressure rating to 250 PSI, Vacuum to 28" Mercury
- Wide choice of materials to suit customer's application
- Bubble-tight shutoff at full pressure rating
- Dead-end service at 200 PSI, no down-stream flange required

### Operation

Bare shaft, lever-lock flow control handle, worm gear operator, electric and pneumatic actuators

### Body Styles

Tapped full lug or wafer

# 200 PSI Butterfly Valves

Ductile Iron Body • Extended Neck • Geometric Drive  
Molded-in Seat Liner • Lug and Wafer Style

**Sizes 2" through 12"**

Install between Std. ANSI Class 125/150 Flanges

CONFORMS TO MSS-SP67 • MSS-SP25 • API-609

## MATERIAL LIST

PART	SPECIFICATION
1. Stem	Stainless Steel ASTM A 582 Type 416
2. Collar Bushing	Brass ASTM B 124
3. Stem Seal	Buna-N Rubber Nitrile
4. Body Seal	Buna-N Rubber Nitrile
5. Nameplate	Aluminum
6. Upper Bushing	Copper CDA 122
7. Liner	Buna-N Rubber Nitrile
8. Disc	Alum. Brz. ASTM B 148 Alloy 954/955
9. Lower Bushing	Copper CDA 122
10. Body Wafer	Ductile Iron ASTM A 536
11. Body Lug	Ductile Iron ASTM A 536

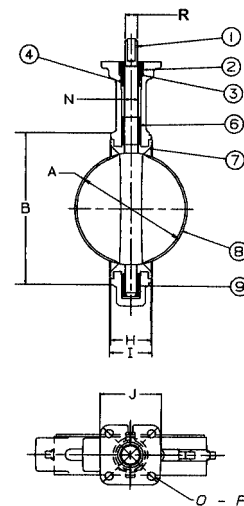


**WD 2100**  
Wafer Style  
Buna-N Liner  
and Aluminum  
Bronze Disc

**LD 2100**  
Lug Style  
Buna-N Liner  
and Aluminum  
Bronze Disc

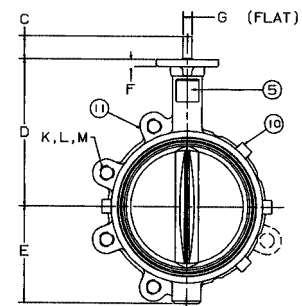
## DIMENSIONS — WEIGHTS

Size												
In.	mm.	A	B	C	D	E	F	G Flat	Metal H	Rubber I	J Square	N Dia.
2	50	2.53	4.00	1.25	5.38	2.88	.38	.312	1.688	1.812	3.25	.500
2½	65	2.90	4.69	1.25	5.88	3.27	.38	.370	1.812	1.938	3.25	.562
3	80	3.15	5.12	1.25	6.12	3.40	.38	.370	1.812	1.938	3.25	.562
4	100	4.09	6.12	1.25	6.88	4.00	.38	.403	2.062	2.188	3.25	.625
5	125	5.13	7.25	1.25	7.38	4.75	.38	.496	2.188	2.312	3.25	.750
6	150	6.13	8.25	1.25	8.00	5.29	.38	.496	2.188	2.312	3.25	.750
8	200	8.13	10.41	1.25	9.25	6.50	.50	.560	2.375	2.500	3.25	.875
10	250	10.13	12.52	1.25	10.50	8.00	.50	.686	2.688	2.812	4.75	1.125
12	300	12.13	15.00	1.25	12.00	9.25	.50	.748	3.000	3.125	4.75	1.250



## Capscrew/Stud Data

Size	O In. mm.	P B.C.	R Dia.	K Dia.	L No.	Wafer Length Dia.	Lug Length	M B.C.	Lug Weight		Wafer Weight		
									Lbs.	Kg.	Lbs.	Kg.	
2	50	3.25	.437	.437	4	5/8-11unc	4	1½	4¾	7	3.2	5.5	2.5
2½	65	3.25	.437	.500	4	5/8-11unc	4¼	1½	5½	9	4.1	7.5	3.4
3	80	3.25	.437	.500	4	5/8-11unc	4¼	1⅝	6	9.5	4.3	8	3.6
4	100	3.25	.437	.562	8	5/8-11unc	5	1⅞	7½	15	6.8	11	5.0
5	125	3.25	.437	.656	8	¾-10unc	5¼	2	8½	21	9.5	15	6.8
6	150	3.25	.437	.656	8	¾-10unc	5¼	2	9½	24	10.9	18	8.2
8	200	3.25	.437	.781	8	¾-10unc	5¾	2¼	11¾	34	15.4	28	12.7
10	250	5.00	.562	1.000	12	7/8-9unc	6¼	2¼	14¼	62	28.1	45.5	20.7
12	300	5.00	.562	1.062	12	7/8-9unc	6¾	2½	17	90	40.9	70	31.8



For actuated service where a lower torque is required use NIBCO Fig. No. WDLXXX-0 or LDLXXX-0 series, sizes 2" thru 12" only. Maximum pressure rating of 100 PSI for wet application and 50 PSI for dry application

NOT RECOMMENDED  
FOR STEAM SERVICE

# 250 PSI Butterfly Valves

Ductile Iron Body • Extended Neck • Geometric Drive  
Molded-in Seat Liner • Lug and Wafer Style

**Sizes 2" through 12"**

Install between Std. ANSI Class 125/150 Flanges

CONFORMS TO MSS-SP67 • MSS-SP25 • API-609

## MATERIAL LIST

PART	SPECIFICATION
1. Stem	Stainless Steel ASTM A 582 Type 416
2. Collar Bushing	Brass ASTM B 124
3. Stem Seal	EPDM Rubber
4. Body Seal	EPDM Rubber
5. Nameplate	Aluminum
6. Upper Bushing	Copper CDA 122
7. Liner	EPDM Rubber
8. Disc	Ductile Iron ASTM A 395 (plated)
9. Lower Bushing	Copper CDA 122
10. Body Wafer	Ductile Iron ASTM A 536
11. Body Lug	Ductile Iron ASTM A 536

## DIMENSIONS — WEIGHTS

Size		A	B	C	D	E	F	G	Metal	Rubber	J	N
In.	Mm.							Flat	H	I	Square	Dia.
2	50	2.53	4.00	1.25	5.38	2.88	.38	.312	1.688	1.812	3.25	.500
2½	65	2.90	4.69	1.25	5.88	3.27	.38	.370	1.812	1.938	3.25	.562
3	80	3.15	5.12	1.25	6.12	3.40	.38	.370	1.812	1.938	3.25	.562
4	100	4.09	6.12	1.25	6.88	4.00	.38	.403	2.062	2.188	3.25	.625
5	125	5.13	7.25	1.25	7.38	4.75	.38	.496	2.188	2.312	3.25	.750
6	150	6.13	8.25	1.25	8.00	5.29	.38	.496	2.188	2.312	3.25	.750
8	200	8.13	10.41	1.25	9.25	6.50	.50	.560	2.375	2.500	3.25	.875
10	250	10.13	12.52	1.25	10.50	8.00	.50	.686	2.688	2.812	4.75	1.125
<b>12</b>	<b>300</b>	<b>12.13</b>	<b>15.00</b>	<b>1.25</b>	<b>12.00</b>	<b>9.25</b>	<b>.50</b>	<b>.748</b>	<b>3.000</b>	<b>3.125</b>	<b>4.75</b>	<b>1.250</b>

## Capscrew/Stud Data

Size	O	P	R	K	L	Wafer Length	Lug Length	M	Lug Weight		Wafer Weight		
									Lbs.	Kg.	Lbs.	Kg.	
2	50	3.25	.437	.437	4	5/8-11unc	4	1½	4¾	7	3.2	5.5	2.5
2½	65	3.25	.437	.500	4	5/8-11unc	4¼	1½	5½	9	4.1	7.5	3.4
3	80	3.25	.437	.500	4	5/8-11unc	4¼	1⅝	6	9.5	4.3	8	3.6
4	100	3.25	.437	.562	8	5/8-11unc	5	1⅞	7½	15	6.8	11	5.0
5	125	3.25	.437	.656	8	¾-10unc	5¼	2	8½	21	9.5	15	6.8
6	150	3.25	.437	.656	8	¾-10unc	5¼	2	9½	24	10.9	18	8.2
8	200	3.25	.437	.781	8	¾-10unc	5¾	2¼	11¾	34	15.4	28	12.7
10	250	5.00	.562	1.000	12	7/8-9unc	6¼	2¼	14¼	62	28.1	45.5	20.7
12	300	5.00	.562	1.062	12	7/8-9unc	6¾	2½	17	90	40.9	70	31.8

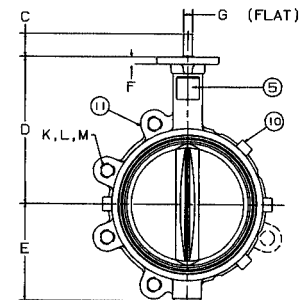
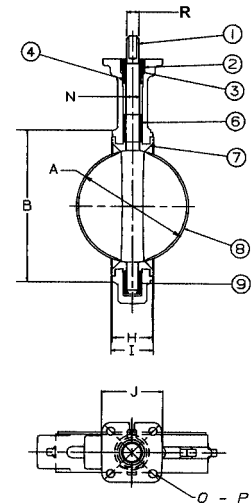
For actuated service where a lower torque is required use NIBCO Fig. No. WDLXXX-0 or LDLXXX-0 series, sizes 2" thru 12" only. Maximum pressure rating of 100 PSI for wet application and 50 PSI for dry application

NOT RECOMMENDED  
FOR STEAM SERVICE



**WD 3010**  
Wafer Style  
EPDM Liner  
and Ductile Disc

**LD 3010**  
Lug Style  
EPDM Liner  
and Ductile Disc



# 250 PSI Butterfly Valves

Ductile Iron Body • Extended Neck • Geometric Drive  
Molded-in Seat Liner • Lug and Wafer Style

**Sizes 2" through 12"**

Install between Std. ANSI Class 125/150 Flanges

CONFORMS TO MSS-SP67 • MSS-SP25 • API-609

## MATERIAL LIST

PART	SPECIFICATION
1. Stem	Stainless Steel ASTM A 582 Type 416
2. Collar Bushing	Brass ASTM B 124
3. Stem Seal	Buna-N Rubber
4. Body Seal	Buna-N Rubber
5. Nameplate	Aluminum
6. Upper Bushing	Copper CDA 122
7. Liner	Buna-N Rubber
8. Disc	Ductile Iron ASTM A 395 (Plated)
9. Lower Bushing	Copper CDA 122
10. Body Wafer	Ductile Iron ASTM A 536
11. Body Lug	Ductile Iron ASTM A 536

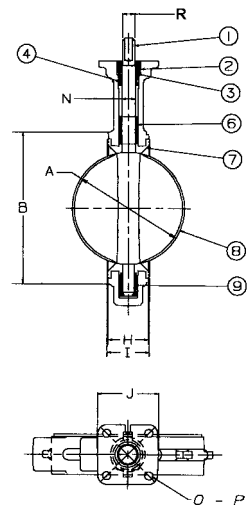


**WD 3110**  
Wafer Style  
Buna-N Liner  
and Ductile Disc

**LD 3110**  
Lug Style  
Buna-N Liner  
and Ductile Disc

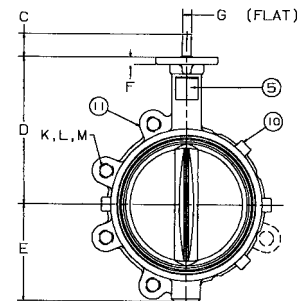
## DIMENSIONS — WEIGHTS

Size								G	Metal	Rubber	J	N
In.	mm.	A	B	C	D	E	F	Flat	H	I	Square	Dia.
2	50	2.53	4.00	1.25	5.38	2.88	.38	.312	1.688	1.812	3.25	.500
2½	65	2.90	4.69	1.25	5.88	3.27	.38	.370	1.812	1.938	3.25	.562
3	80	3.15	5.12	1.25	6.12	3.40	.38	.370	1.812	1.938	3.25	.562
4	100	4.09	6.12	1.25	6.88	4.00	.38	.403	2.062	2.188	3.25	.625
5	125	5.13	7.25	1.25	7.38	4.75	.38	.496	2.188	2.312	3.25	.750
6	150	6.13	8.25	1.25	8.00	5.29	.38	.496	2.188	2.312	3.25	.750
8	200	8.13	10.41	1.25	9.25	6.50	.50	.560	2.375	2.500	3.25	.875
10	250	10.13	12.52	1.25	10.50	8.00	.50	.686	2.688	2.812	4.75	1.125
12	300	12.13	15.00	1.25	12.00	9.25	.50	.748	3.000	3.125	4.75	1.250



## Capscrew/Stud Data

Size	O	P	R	K	L	Wafer Length	Lug Length	M	Lug Weight		Wafer Weight		
									Lbs.	Kg.	Lbs.	Kg.	
2	50	3.25	.437	.437	4	5/8-11unc	4	1½	4¾	7	3.2	5.5	2.5
2½	65	3.25	.437	.500	4	5/8-11unc	4¼	1½	5½	9	4.1	7.5	3.4
3	80	3.25	.437	.500	4	5/8-11unc	4¼	1¾	6	9.5	4.3	8	3.6
4	100	3.25	.437	.562	8	5/8-11unc	5	1¾	7½	15	6.8	11	5.0
5	125	3.25	.437	.656	8	¾-10unc	5¼	2	8½	21	9.5	15	6.8
6	150	3.25	.437	.656	8	¾-10unc	5¼	2	9½	24	10.9	18	8.2
8	200	3.25	.437	.781	8	¾-10unc	5¾	2¼	11¾	34	15.4	28	12.7
10	250	5.00	.562	1.000	12	7/8-9unc	6¼	2¼	14¼	62	28.1	45.5	20.7
12	300	5.00	.562	1.062	12	7/8-9unc	6¾	2½	17	90	40.9	70	31.8



For actuated service where a lower torque is required use NIBCO Fig. No. WDLXXX-0 or LDXXX-0 series, sizes 2" thru 12" only. Maximum pressure rating of 100 PSI for wet application and 50 PSI for dry application

NOT RECOMMENDED  
FOR STEAM SERVICE

# 250 PSI Butterfly Valves

Ductile Iron Body • Extended Neck • Geometric Drive • 316 S.S. Trim  
Molded-in Seat Liner • Lug and Wafer Style

**Sizes 2" through 12"**

Install between Std. ANSI Class 125/150 Flanges

CONFORMS TO MSS-SP67 • MSS-SP25 • API-609

## MATERIAL LIST

PART	SPECIFICATION
1. Stem	Stainless Steel ASTM A 564 Type 17-4PH
2. Collar Bushing	Stainless Steel ASTM A 276 Type 316
3. Stem Seal	Options: See Below*
4. Body Seal	Options: See Below*
5. Nameplate	Aluminum
6. Upper Bushing	Stainless Steel ASTM A 276 Type 316
7. Liner	Options: See Below*
8. Disc	Stainless Steel ASTM A 743 Grade CF8M
9. Lower Bushing	Stainless Steel ASTM A 276 Type 316
10. Body Wafer	Ductile Iron ASTM A 536
11. Body Lug	Ductile Iron ASTM A 536

\*Optional Liners/Seals: **0** - EPDM  
**1** - Buna-N (Nitrile)  
**2** - Fluoroelastomer

## DIMENSIONS — WEIGHTS

Size		A	B	C	D	E	F	G	Metal Flat	Rubber H	J	N
In.	mm.										Square	Dia.
2	50	2.53	4.00	1.25	5.38	2.88	.38	.312	1.688	1.812	3.25	.500
2½	65	2.90	4.69	1.25	5.88	3.27	.38	.370	1.812	1.938	3.25	.562
3	80	3.15	5.12	1.25	6.12	3.40	.38	.370	1.812	1.938	3.25	.562
4	100	4.09	6.12	1.25	6.88	4.00	.38	.403	2.062	2.188	3.25	.625
5	125	5.13	7.25	1.25	7.38	4.75	.38	.496	2.188	2.312	3.25	.750
6	150	6.13	8.25	1.25	8.00	5.29	.38	.496	2.188	2.312	3.25	.750
8	200	8.13	10.41	1.25	9.25	6.50	.50	.560	2.375	2.500	3.25	.875
10	250	10.13	12.52	1.25	10.50	8.00	.50	.686	2.688	2.812	4.75	1.125
12	300	12.13	15.00	1.25	12.00	9.25	.50	.748	3.000	3.125	4.75	1.250

### Capscrew/Stud Data

Size	O	P	R	K	L	Wafer Length	Lug Length	M	Lug Weight		Wafer Weight		
									Lbs.	Kg.	Lbs.	Kg.	
2	50	3.25	.437	.437	4	5/8-11unc	4	1½	4¾	7	3.2	5.5	2.5
2½	65	3.25	.437	.500	4	5/8-11unc	4¼	1½	5½	9	4.1	7.5	3.4
3	80	3.25	.437	.500	4	5/8-11unc	4¼	1¾	6	9.5	4.3	8	3.6
4	100	3.25	.437	.562	8	5/8-11unc	5	1¾	7½	15	6.8	11	5.0
5	125	3.25	.437	.656	8	¾-10unc	5¼	2	8½	21	9.5	15	6.8
6	150	3.25	.437	.656	8	¾-10unc	5¼	2	9½	24	10.9	18	8.2
8	200	3.25	.437	.781	8	¾-10unc	5¾	2¼	11¾	34	15.4	28	12.7
10	250	5.00	.562	1.000	12	7/8-9unc	6¼	2¼	14¼	62	28.1	45.5	20.7
12	300	5.00	.562	1.062	12	7/8-9unc	6¾	2½	17	90	40.9	70	31.8

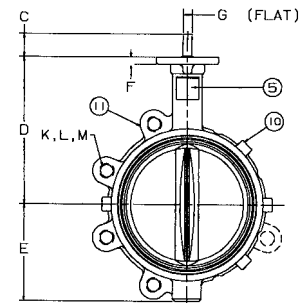
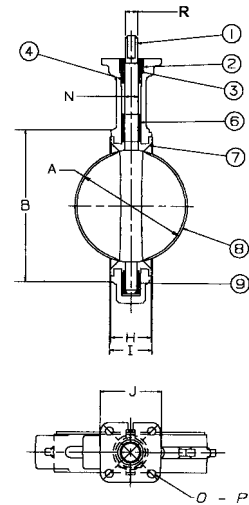
For actuated service where a lower torque is required use NIBCO Fig. No. WDLXXX-0 or LDXXX-0 series, sizes 2" thru 12" only. Maximum pressure rating of 100 PSI for wet application and 50 PSI for dry application



**WD 3\*22**  
Wafer Style  
Optional Liner  
and CF8M Disc

**LD 3\*22**

Lug Style  
Optional Liner  
and CF8M Disc



NOT RECOMMENDED  
FOR STEAM SERVICE