

DV INTEGRALLY FLANGED DIAPHRAGM VALVE



IPEX THERMOPLASTIC VALVES

Special Features:

- Integrally molded flange style with overall dimensions common to most plastic lined diaphragm valves
- Clear position indicator
- Over tightening can be prevented by adjustable travel stop
- Plastic encapsulated SS nuts
- Part of the Xirtec™ system of pipe, valves and fittings

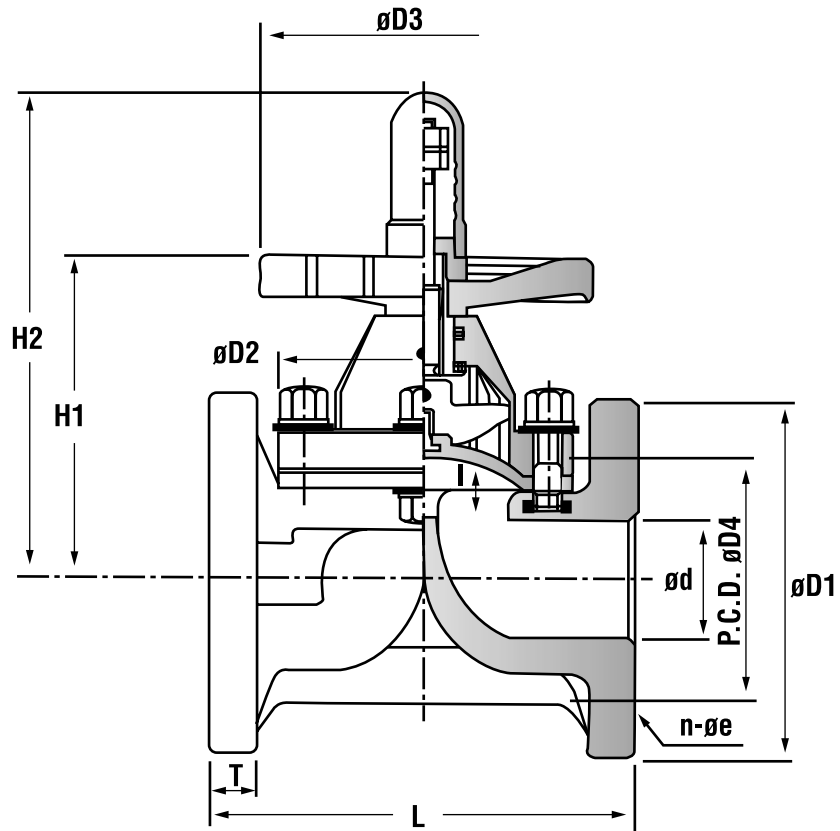


Valve Body Material: PVC
Size Range: 1/2" thru 6"
Pressure: 150 psi at 73°F
Diaphragm Material: EPDM or PTFE



IPEX
Committed to Excellence

TECHNICAL DATA



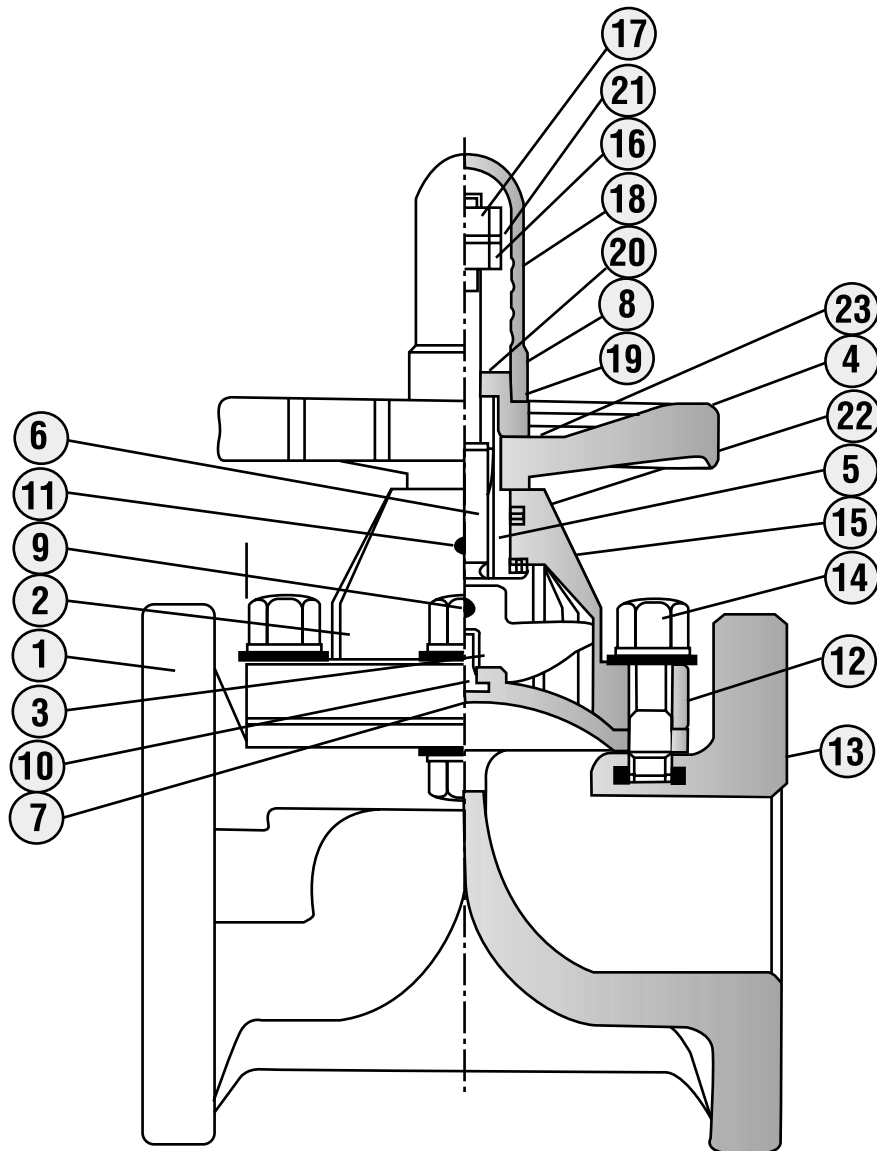
Size (in)	Cv
1/2	3.27
3/4	5.29
1	8.87
1 1/2	31.09
2	43.15
3	116.79
4	186.78
6	345.26

*Cv = flow rate
(GPM) @ 68°F with
1 psi pressure drop*

Dimensions											
Size	D ₁	D ₂	D ₃	D ₄	d	H ₁	H ₂	L	l	n ø e	T
1/2	3.50	2.13x2.76	3.74	2.38	.51	3.35	4.96	4.25	.39	4 - .63	.51
3/4	3.85	2.48x3.07	3.74	2.75	.71	3.70	5.39	5.90	.47	4 - .63	.59
1	4.25	2.48x3.46	4.33	3.13	.98	3.86	5.67	5.90	.59	4 - .63	.67
1 1/2	5.00	4.92	5.91	3.88	1.61	5.12	8.66	6.93	.87	4 - .63	.67
2	6.00	5.83	5.91	4.75	2.05	5.83	8.86	7.95	1.22	4 - .75	.67
3	7.50	8.00	8.26	6.00	3.07	9.84	13.50	10.40	1.89	4 - .75	.79
4	9.00	10.04	9.84	7.50	3.94	10.83	15.08	12.95	2.36	8 - .75	.87
6	11.00	15.16	16.14	9.50	5.83	13.15	18.74	18.90	2.76	8 - .87	.95

Dimensions are in inches. Flange bolt hole patterns meet ANSI B16.5.

PARTS



Position	Components	Material	Position	Components	Material
1	body	PVC	13	inserted nut	65 - 125 / 8 set
2	bonnet	PVC	14	nut & washer	25 - 50 / 6 set
3	compressor	AC4A	15	thrust bearing	STANDARD (100 - 150)
4	handwheel	ABS	16	stopper	SUS 304
5	sleeve	C3602	17	set nut	SUS 304
6	stem	C3602	18	gauge cover	AS
7	diaphragm	EPDM, PTFE	19	sheet gasket	EPDM
8	cap	PVC	20	sheet ring	SUS 304
9	compressor pin	SUS 304	21	spring washer	SUP
10	inserted metal	C3604, SUS 304	22	o-ring	NBR
11	grease nipple	C3604 (65 - 150)	23	name plate	PVC
12	bolt & washer	150 / 12 set			

GUIDE SPECIFICATION

DV SERIES: INTEGRALLY FLANGED DIAPHRAGM VALVE

1.0 Diaphragm Valves - DV

1.1 Material

- Valve body shall be made from PVC resin which shall meet or exceed the requirements of 12454 according to ASTM D-1784.

1.2 Diaphragm

- Diaphragm shall be EPDM or PTFE (specifier must select one).

2.0 Design Features

- Integrally molded flanges.
- Clear position indicator.
- Face-to-face dimension to industry standard.

2.1 Pressure Rating

- Valves shall be rated for 150 psi at 73°F.

3.0 Diaphragm valves shall be Xirtec™ 140 by IPEX or approved equal.

Customer Service Centers

Charlotte

10100 Rodney Street, Pineville, NC 28134
Tel: (704) 889-2431
Toll Free: (800) 578-7681
Fax: (704) 889-2810

Chicago

46 Sherwood Terrace, Lake Bluff, IL 60044
Tel: (847) 295-4643
Toll Free: (800) 258-1445
Fax: (847) 295-6038

Houston

2228 Wirtcrest, Suite H, Houston, TX 77055
Tel: (713) 683-3893
Toll Free: (800) 735-4784
Fax: (713) 683-6259

Louisville

2000 Watterson Trail, Louisville, KY 40299
Tel: (502) 491-8939
Toll Free: (800) 766-2037
Fax: (502) 491-8796

Toronto

2441 Royal Windsor Drive, Mississauga, ON L5J 4C7
Tel: (905) 403-0264
Toll Free: (800) 463-9572
Fax: (905) 403-9195

IPEX offers the world's most extensive range of thermoplastic piping systems for the industrial, mechanical, municipal and electrical markets.

www.ipexinc.com

WARRANTY: All IPEX products are guaranteed against defects resulting from faulty workmanship or materials. If any such product is found to be defective by reason of faulty workmanship or materials, upon written notice and return of the product, the defective product will be replaced by IPEX free of charge, including shipping charges for the replacement product. Claims for labor costs and other expenses required to replace such defective product or to repair any damage resulting from the use thereof will not be allowed by IPEX. Our liability is limited to the price paid for the defective product. IPEX will not be bound by any warranty, other than above set forth, unless such warranty is in writing.

This literature is published in good faith and is believed to be reliable. However, IPEX does not represent and/or warrant in any manner the information and suggestions contained in this brochure. Data presented is the result of laboratory tests and field experience.

IPEX maintains a policy of ongoing product improvement. This may result in modifications of features and/or specifications without notice.